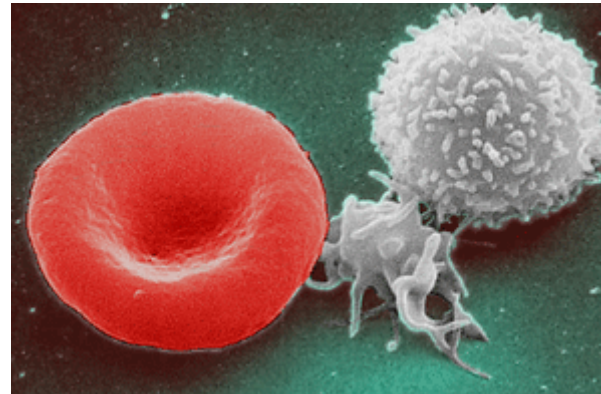


Hematology

The hematology course deals with components of the hematopoietic system – bone marrow, blood, and lymphoid tissues – emphasizing basic structures (of cells, tissues, organs) and functions (from molecular to tissue to whole organ level) in health and disease. Clinical presentations within the Hematology course are focused on common situations and presentations that a primary care physician is most likely to encounter.

Clinical Presentations

- Anemia
- Polycythemia
- Abnormal WBCs
- Lymphadenopathy/Splenomegaly
- Bleeding Diatheses
- Hypercoagulable States



[Red White Blood cells.jpg](#): Electron Microscopy Facility at The National Cancer Institute at Frederick (NCI-Frederick) derivative work: [WhatamIdoing \(talk\)](#)

This work is in the [public domain](#) in the United States because it is a [work prepared by an officer or employee of the United States Government as part of that person's official duties](#) under the terms of Title 17, Chapter 1, Section 105 of the [US Code](#).

http://commons.wikimedia.org/wiki/File:Red_White_Blood_cells.png